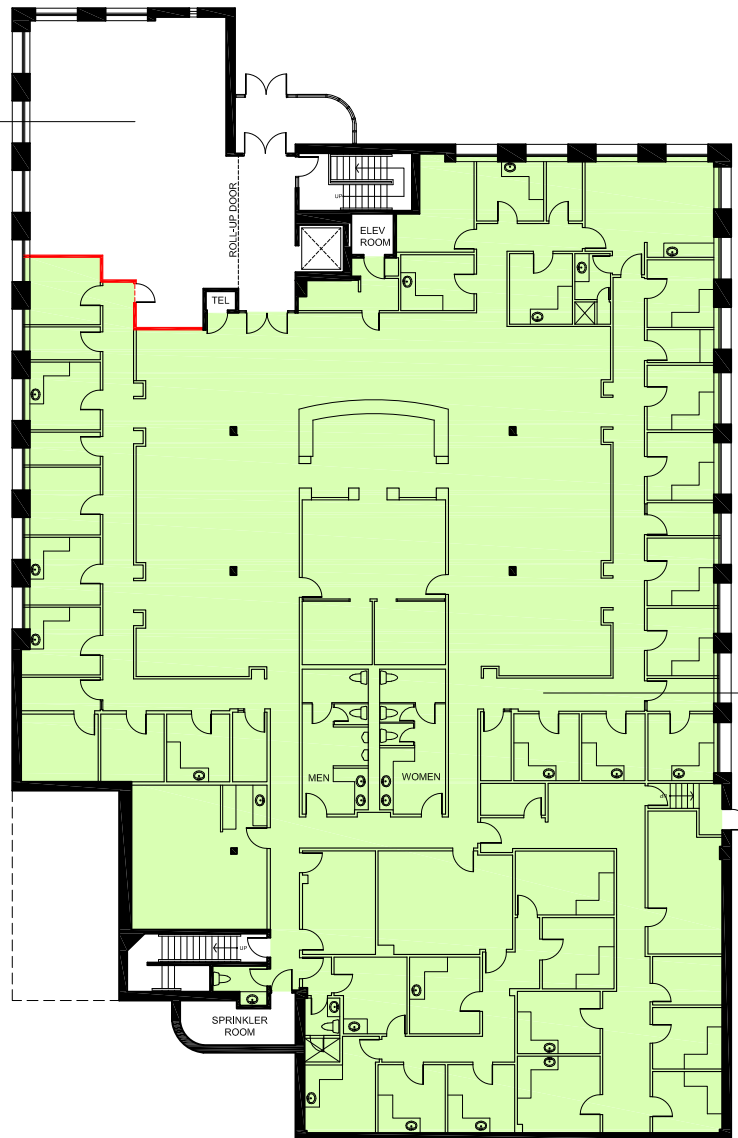
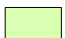



FLOOR PLAN

SUITE 110
OCCUPIED



SUITE 100
AVAILABLE
12,478 SF

 AVAILABLE NOW
SF = RENTABLE AREA
AS PER BOMA/ANSI Z65.1 1996
 DEMISING WALL

0 10 50 FT.



APPROXIMATE NORTH
© 2021 Space Database Inc. All Rights Reserved



PROJECT NAME
**MALVERN MEDICAL ARTS
BUILDING**
1333 NEILSON RD
TORONTO, ONTARIO

DRAWING NAME
FIRST FLOOR
VACANCIES

SCALE
AS NOTED

DATE
SEPTEMBER 23 2021

DRAWING NO.
M1