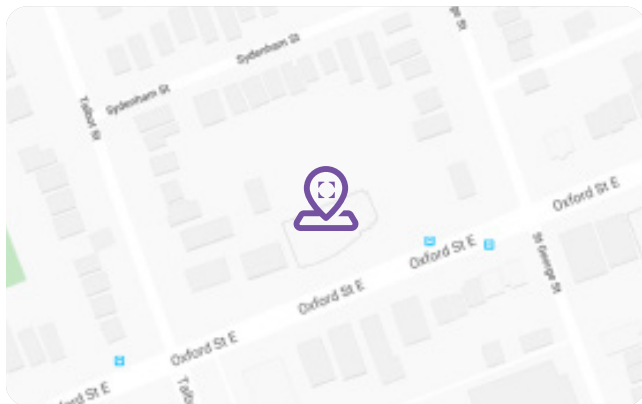




Oxford Health Centre

140 Oxford Street East, London, Ontario



Leasing Inquiries



Zoë Adey-Babinski
Leasing Manager

C +1 437 961 2568
E zoe.adey-babinski@nwhreit.com
W nwhproperties.com

Location Highlights



Major Intersection

Oxford Street East and
Richmond Street



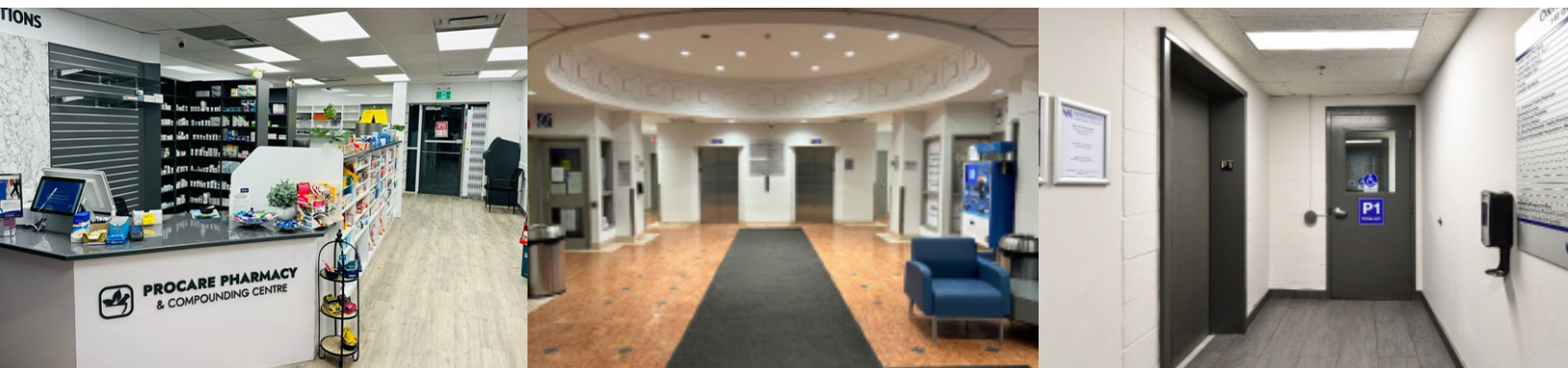
Nearest Hospital

< 1 km St. Joseph's Hospital
3.1 km University Hospital



Public Transit Access

London Transit
Bus 17 - Byron via Oxford



Oxford Health Centre

140 Oxford Street East, London, Ontario



Property Description

Oxford Health Centre is a four-storey, 39,183-square-foot medical outpatient building located in close proximity to St. Joseph's Hospital. The building is tenanted by a full range of family physicians and medical specialists including Well Health Clinic, a large dermatology clinic, a liver centre, a diabetes and endocrinology clinic, as well as ancillary healthcare services including a pharmacy, laboratory, and rehabilitation clinic. Ample on-site parking is available on the surface lot and in an underground parkade equipped with EV charging stations.

Leasing Inquiries



Zoë Adey-Babinski
Leasing Manager

C +1 437 961 2568
E zoe.adey-babinski@nwhreit.com
W nwhproperties.com

Property Highlights

| | |
|------------------------------------|-------------------------|
| Building Size | 39,183 sq.ft. |
| Floors | 4 |
| Asking Rent | Market |
| Additional Rent (est. 2025) | |
| Operating Costs | \$14.31 |
| Realty Taxes | \$3.54 |
| In Suite Cleaning Costs | \$1.64 |
| Total | \$19.49 psf |
| Bike Storage | Outdoor |
| Parking | Underground and Surface |
| Electric Vehicle Chargers | Yes |
| WiredScore | Silver |